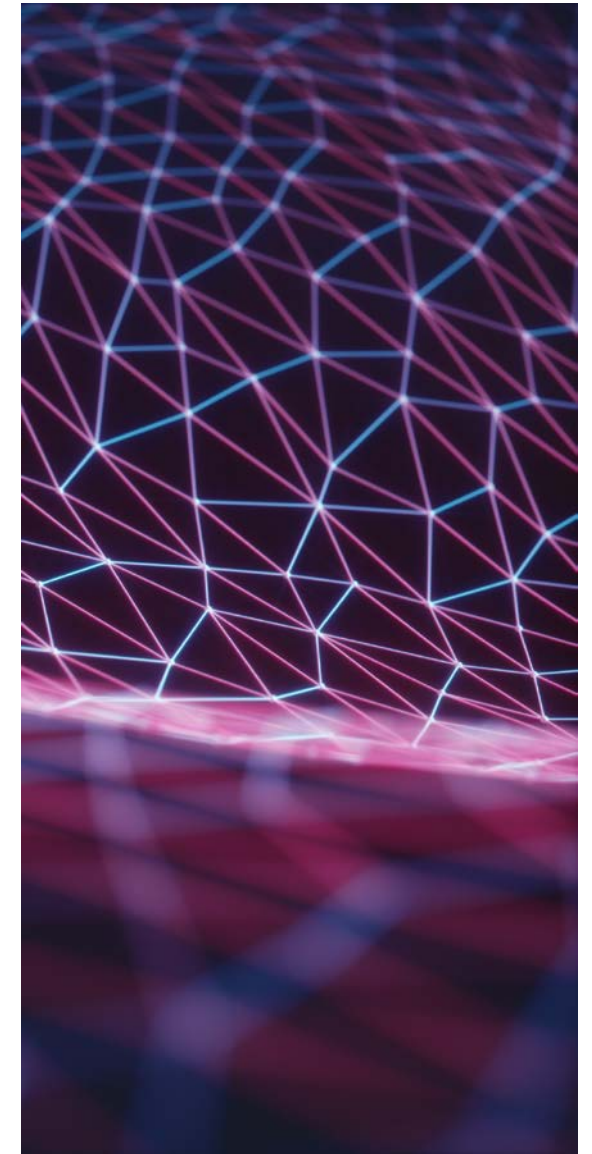


Participant Recruitment Working Group

Molly Belinski, MPA

Program Manager, UCSF CTSI

October 3, 2018



Guidelines and best practices for multisite EHR recruitment

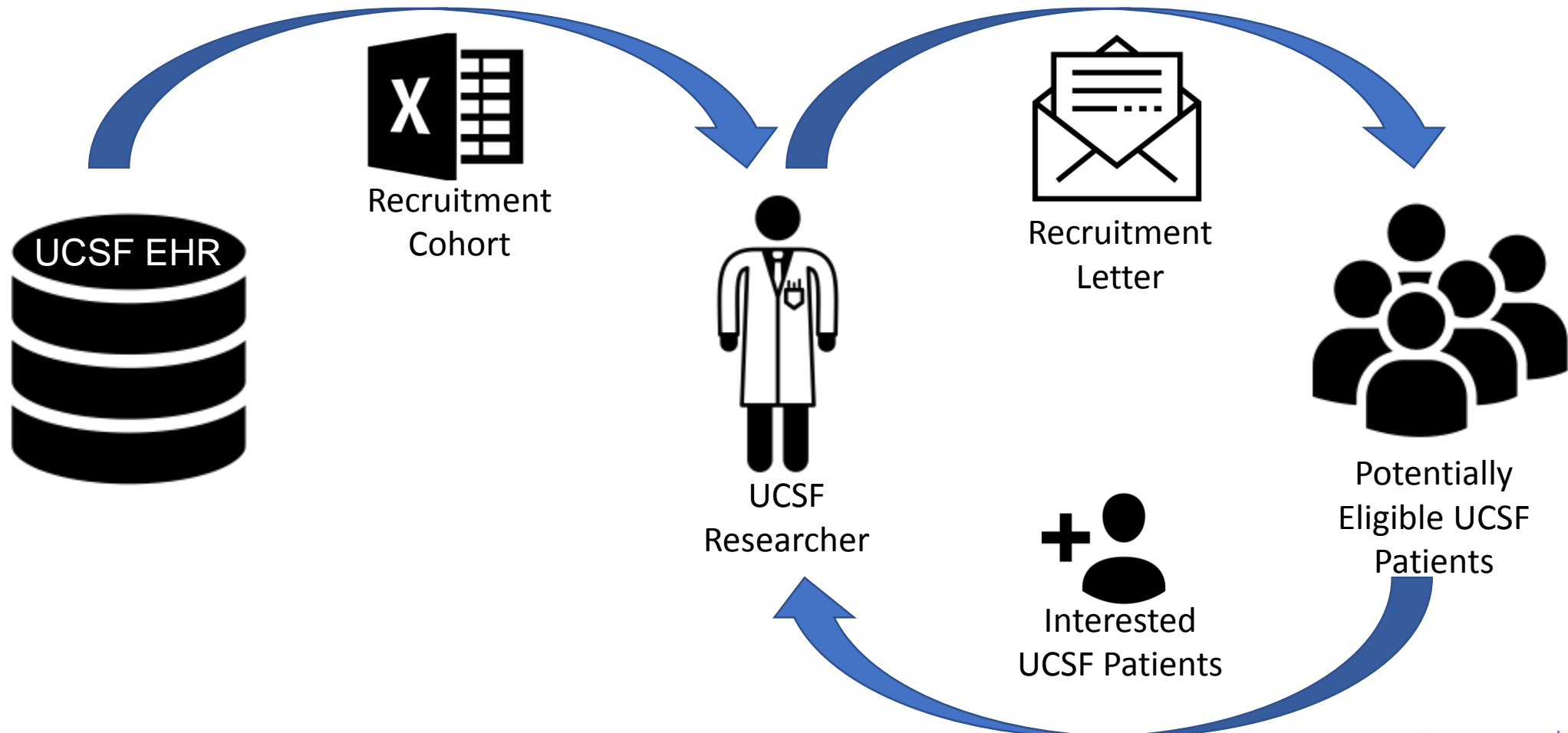
The problem: there is a need for mutual understanding of best practices and guidelines for sharing EHR-Derived Cohorts for recruitment in multi-site trials between UCs.

Why this project?

1. UC Rely and upcoming NIH Reliance mandate
2. Increased use of EHR-derived recruitment cohorts
3. Technically possibly but logistically difficult

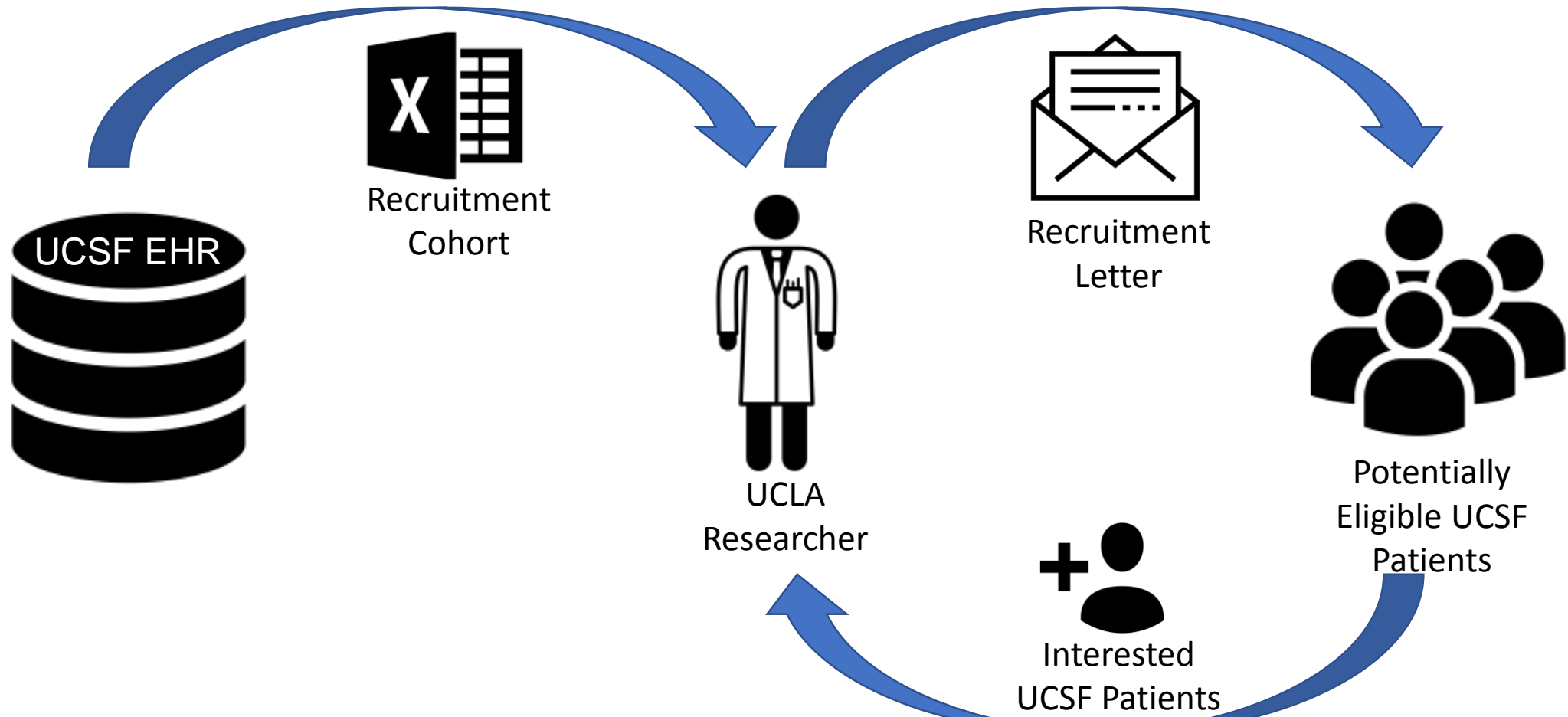
Single-site EHR Recruitment

Use case: UCSF



Multisite EHR Recruitment

Use case: UCLA and UCSF

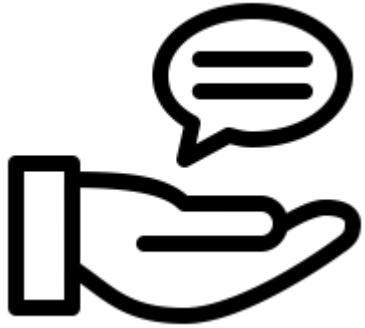


Multisite EHR Recruitment Use Case

Why share the data?

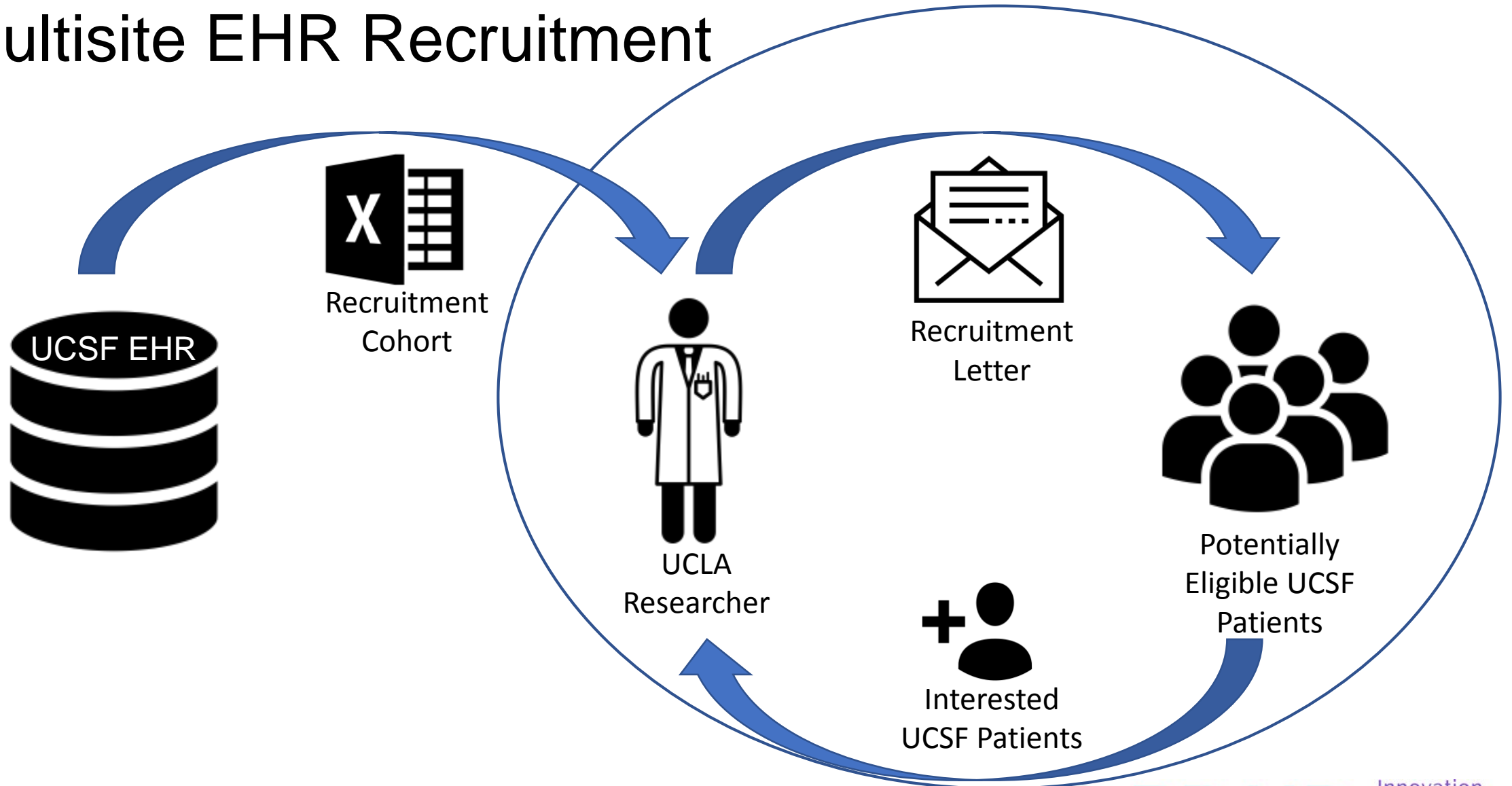
- Administrative efficiency
- UCLA has multilingual staff and capacity to recruit a more diverse population
- UCLA has funding to perform these activities

Consultation with Privacy



- UC is one covered entity under HIPAA
- This is allowable
- Proceed with caution
- Opportunity to develop best practices around patient contact

Multisite EHR Recruitment



Using these guidelines

- The vision:
 - Researchers use these guidelines and best practices to create respectful, compliant recruitment plans
 - Create common understanding and acceptance of what this means
 - Establish a pathway for multisite EHR recruitment

Partnerships - Thanks

BRAID PR Working Group

- Fred Stevenson, UCD
- Adrijana Gombosev, UCI
- Joshua Grill, UCI
- Douglas Bell, UCLA
- Marianne Zachariah, UCLA
- Brandon Brown, UCR
- Rodney von Jaeger, UCSD
- Molly Belinski, UCSF
- Vanessa Jacoby, UCSF
- Katherine Connors, Stanford
- Ashley Dunn, Stanford

